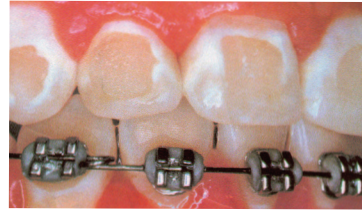
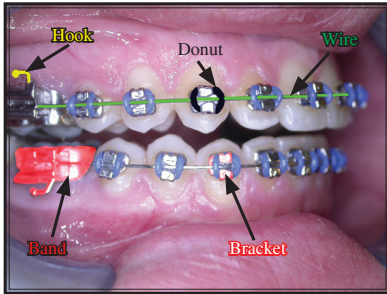


# Instructions Following the Placement of Braces



Decalcifications

***Congratulations, you are on your way to having that nice, straight smile you've dreamed of! To minimize problems and speed up treatment please follow these instructions:***

- 1- Your teeth will be somewhat sensitive every time we reactivate the wire. If this sensitivity bothers you, you may take analgesics such as Advil or Tylenol.
- 2- To prevent brackets from becoming “unglued” avoid eating any hard or sticky foods and cut food into bite size pieces.
- 3- If an irritation develops due to the wire or bracket, place a small amount of wax over it to alleviate the discomfort.
- 4- Thorough brushing and flossing are essential to keep the teeth and gums healthy. Lack there of may result in longer duration of treatment and irreversible enamel decalcifications (white spots on teeth).